

Now we are at the second module of the Thailand E-Learning Program. This module explains about the popular destinations which include Bangkok, Kanchanaburi, Hua Hin, Pattaya, Rayong and Trat. This will help you provide with detailed information about distance and transportation, where to go, things to do, new updates and suggested itinerary ideas, so your customers will be fully prepared and most satisfied.

Course Process

Part 1

Bangkok

Part 2

Kanchanaburi

Part 3

Hua Hin

Part 4

Pattaya

Part 5

Rayong

Part 6

Trat (Koh Chang)

BANGKOK

Bangkok (Krungthep) which means “The City of Angels”, is known as the most vibrant city in South East Asia. It is ranked as No. 1 City of the World according to MasterCard’s latest Global Destination cities Survey.

Bangkok welcomes more visitors than any other city in the world and it doesn’t take long to realise why this is a city of extremes with action on every corner: Marvel at the gleaming temples, catch a tuktuk along the bustling Chinatown or take a longtail boat through floating markets. Food is another Bangkok highlight with local dishes served at humble street stalls to haute cuisine at romantic rooftop restaurants.

Luxury malls compete with a sea of boutiques and markets where you can treat yourself without over spending. Extravagant five-star hotels and surprisingly cheap but good hotels welcome you with the same famed Thai hospitality. And visit to Bangkok would not be complete without a glimpse of its famous nightlife – from cabarets to exotic nightlife districts, Bangkok never ceases to amaze.



Luxury malls compete with a sea of boutiques and markets where you can treat yourself without over spending. Extravagant five-star hotels and surprisingly cheap but good hotels welcome you with the same famed Thai hospitality. And visit to Bangkok would not be complete without a glimpse of its famous nightlife – from cabarets to exotic nightlife districts, Bangkok never ceases to amaze.

Things to do in Bangkok

- **Temples & Thai Life**

Grand Palace & Wat Phra Kaew: <http://www.tourismthailand.org/Attraction/The-Grand-Palace-52>

Wat Arun: <http://www.tourismthailand.org/Wat-Arun-ratchawararam-Ratchaworamahawihan>

Chao Phraya River & Waterways: www.chaophrayacruise.com

Rattanakosin Museum: <http://www.nitasrattanakosin.com/home.php>

Rattankosin Tram Tour & Cycling: <http://www.bangkoktram.com/>



- **Shop**

Chatuchak Weekend Market: <http://www.tourismthailand.org/Chatuchak-Weekend-Market>

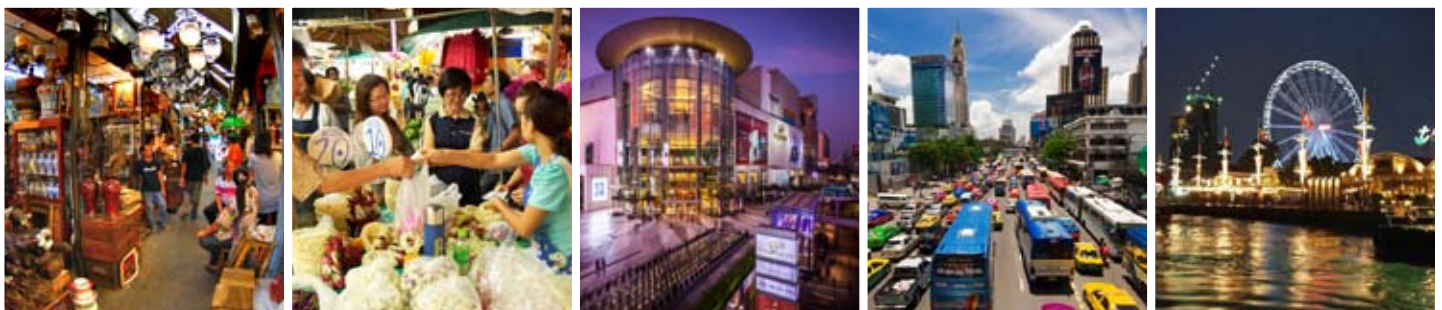
Flower Market (Pak Klong Talad): www.tourismthailand.org/Attraction/Pak-Khlong-Talat-2035

Pratunam/Phetchaburi Road Area: <http://www.womentravelthailand.com/where-to-shop/>

Ratchaprasong and Prathumwan Area: <http://www.womentravelthailand.com/where-to-shop/>

Sukhumvit area: <http://www.womentravelthailand.com/where-to-shop/>

Asiatique: <http://www.tourismthailand.org/Accessibility/Shopping/Asiatique-The-Riverfront-3636>



- **Museums & Performances Centers**

Siam Niramit: <http://www.tourismthailand.org/Attraction/Siam-Niramit-2058>

Art in Paradise: <http://www.tourismthailand.org/Attraction/Art-in-Paradise-Bangkok-6616>

Madame Tussauds: <https://www.madametussauds.com/bangkok/en/>



- **Family Activity**

Dusit Zoo: The premier zoological facilities in Southeast Asia.

Kidzania Bangkok: <http://bangkok.kidzania.co>

Sea Life Bangkok Ocean World: www.sealifebangkok.com, Tel : +66 2687 2000

Muay Thai: Spectacle real Muay Thai show or learn Muay Thai with Thai greatest boxers.

Dinosaur Planet: www.dinosaurplanet.net

Snow House: Snow Town Bangkok is an indoor themed village and play area with 30-40 cm of artificial snow located in Gateway Ekkamai shopping mall.



- **Night Life**

Night Life Rooftop & Sunset Cocktail –

Available at 5-stars hotels and bars throughout the city



Did You Know:

- The Grand Palace is the most visited attraction in Bangkok. (TIP* get there early in the day to avoid the heat and crowd)
- Peak Season is November – February (but Bangkok is busy with tourists all year round)
- The most well known event for shopping lovers and international female tourist is '**Amazing Thailand Grand Sale**' starting from June 15th to August 15th. All shops offer discounts from 15% to 80%.



How to travel around Bangkok

There are many ways to get around Bangkok, including the following list of the most popular means of transportation

Taxi and TukTuks: Taxi fare starts at 35 bath for the first 3 km and approximately 5 bath for every additional kilometer.

Motorcycle Taxis: The fastest way to get through the traffic congestion of Bangkok

Sky Train: There are two lines in operation: Silom Lines and Sukhumvit Line. They run daily from 6:00 am.to midnight.

Subway: The MRT Chaoloem Ratchamongkhon Line has 18 stations and operates from 6:00 am.to midnight.



Kanchanaburi

Located 130 km west of Bangkok, just two-hour drive away, “Muang Kan” is the ideal travel escape from the fast paced life in the big city. Looking for the simple pleasures of sun, stunning natural beauty, beautiful rivers, and spectacular waterfalls? Look no further than Kanchanaburi. Visit Kanchanaburi for a whole lot more exciting discoveries like rafting trips, ideal spot to explore the Thai countryside as well as a great place to stay in raft house on the river make memorably special experiences.



Things to do

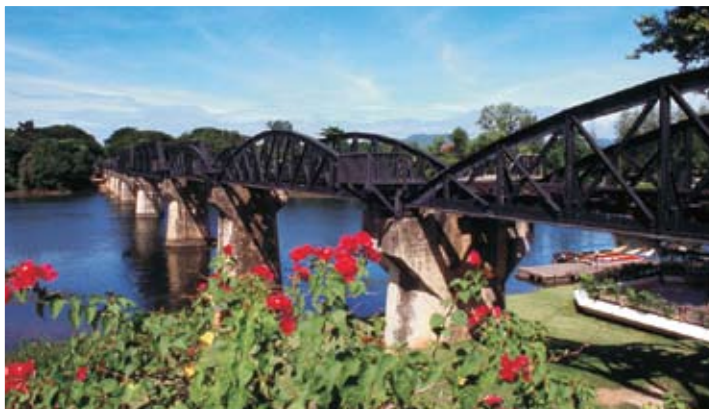
- **History and Museum**

The Bridge over the River Kwai: <http://www.tourismthailand.org/Attraction/Bridge-over-the-River-Kwai-231>

JEATH War Museum: <http://operator.tourismthailand.org/Accessibility/attraction/detail?id=230&title=The-Jeath-War-Museum>

World War II Museum: <http://www.tourismthailand.org/Attraction/World-War-II-Memorial-of-the-Japanese-Army-Khao-Daeng-2594>

Hellfire Pass Memorial Museum: <http://www.tourismthailand.org/Attraction/Hell-Fire-Pass-Memorial-Museum-258>



- **Nature**

Erawan National Park: <http://www.tourismthailand.org/Attraction/Erawan-National-Park-286>

Sai Yok National Park: <http://www.tourismthailand.org/Attraction/Sai-Yok-National-Park-259>

Srinakarin National Park: <http://www.tourismthailand.org/Attraction/Sri-Nakarin-National-Park-4985>

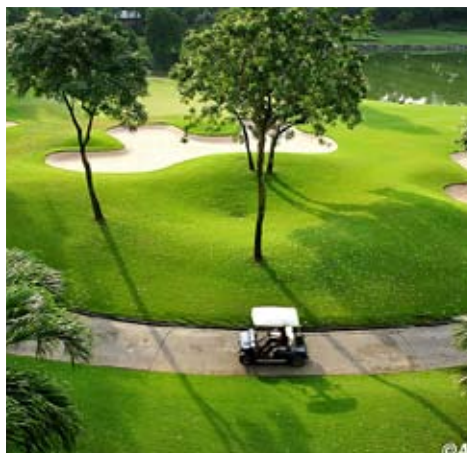


- **Interesting Site Attractions**

Three Pagodas Pass: <http://www.tourismthailand.org/Attraction/Three-Pagodas-Pass-282>

Bamboo Rafting and Jungle trekking: <http://www.tourismthailand.org/Attraction/Sangkhla-Buri-Jungle-Trek-4999>

Golf: There are several glorious golf courses in Kanchanaburi



How to get there

1. **By Car:** Follow Highway 4 heading west from Bangkok, then shortly after Nakhon Pathom, branch right on to Highway 323, which leads to Kanchanaburi.
2. **By Bus:** Both regular and air-conditioned buses leave from the Southern Bus Terminal on Boromratchachonnani Road to Kanchanaburi daily. Tel: 0 2894 6122 www.transport.co.th
3. **By Rail:** Trains leave from Thon Buri Station daily on the three-hour journey to Kanchanaburi. Hotline 1960 www.railway.co.th
4. **By Taxi:** The fastest, but most expensive way to get to Kanchanaburi from anywhere in Bangkok. Taxi drivers will be able to get you here in about 90 minutes for anywhere between 1,000-3,000 Baht, all depending on your bargaining skills.



Hua Hin

Hua Hin is the country's oldest beach resort with an increase in popularity as the summer retreat of the Thai Royal Family, Hua Hin is a well-established beach destination with a wide range of attraction and activities with only 3 hour by drive from Bangkok. Hua Hin also boasts numerous world-class golf courses, bustling local markets, several Buddhist temples, outstanding restaurants, and numerous spas, and health and wellness resorts.

For Indians, Hua Hin becomes popular destination for leisure, family and wedding.



Things to do

- **Beaches and Natures**

Hua Hin Beach: <http://www.tourismthailand.org/Attraction/Hat-Hua-Hin-217>

Khao Takiap: <http://www.tourismthailand.org/Attraction/Khao-Takiap-222>

Pranburi Beach: <http://www.tourismthailand.org/Attraction/Pranburi-Beach-701>



- **History and Palace**

Railway Station: <http://www.tourismthailand.org/Attraction/Hua-Hin-Railway-Station-218>

Mrigadayavan Palace: <http://www.tourismthailand.org/Mrigadayavan-Palace>

- **Shop & Chill**

Hua Hin Night Market: <http://www.tourismthailand.org/Attraction/Hua-Hin-Night-Market-5928>

The Venezia Hua Hin: Theme Shopping Village in Cha Am and Hua Hin



- **Family Attractions**

Santorini Water Fantasy Park: <http://www.tourismthailand.org/Attraction/Santorini-Water-Fantasy-6485>

Vana Nava Hua Hin: <https://www.vananavahuahin.com/>

Hua Hin Hills Vineyard: <http://www.huahinhills.com/>

Sheep Farm, Hua Hin: <http://www.swissheepfarm.com/>

Black Mountain Water Park: www.blackmountainwaterpark.com



- **Sports**

Golf: As its seaside scenic view, Hua Hin has been regarded as one of the most beautiful golfing destinations in Thailand with international standard quality. Here, you can find 8 top premier courses within a 30 minutes drive off the town.



How to get there

1. **Bus:** 3:00- 3:15hrs drive southwest of Bangkok, a distance of 281 km. Frequent buses leave Bangkok's Southern Bus Terminal for Hua Hin and Prachuap Khiri Khan. Tel: 02-4351 199, Website: www.transport.co.th
2. **Car:** From Bangkok, take Highway No. 35 via Samut Songkhram, then Highway No. 4 via Phetchaburi and Hua Hin to Prachuap Khiri Khan, a total distance of 281 km. An alternative route is via Nakhon Pathom and Ratchaburi, a total distance of 320 km.
3. **Rail:** Trains leave from Bangkok Railway Station for Hua Hin and Prachuap Khiri Khan several times a day. For more information contact, Website: www.railway.co.th

Pattaya

Pattaya is always switched on and fun. It is a vibrant coastal city from sunrise to sunset. Its beaches are constantly brimming with life as water sports lovers and sun worshipers take to the waters. After dark, the action shifts to the streets, where drinking and partying continues until dawn. Apart from this, Pattaya offers endless possibilities when it comes to accommodation and entertainment. It has outgrown its image as a seedy beach town to a destination for a wider audience; whether couples, families or business travellers, Pattaya has something for everyone. Only 147 km from Bangkok, it is the closest of Thailand's major beach resorts to the capital city.



Things to do

- **Beaches and Islands**

Pattaya Beach: <http://www.tourismthailand.org/Attraction/Hat-Pattaya-2674>

Jomtien Beach: <http://www.tourismthailand.org/Attraction/Jomtien-Beach-535>

Ko Lan: <http://www.tourismthailand.org/Attraction/Koh-Lan-557>

- **Garden, Winery and Art Centre**

Nong Nooch Tropical Garden & Resort: <http://www.nongnoochtropicalgarden.com/>

Silverlake Winery Pattaya: <http://www.pattayaconciierge.com/specified-place/silverlake-winery-pattaya/201100000005/attraction/>

The Sanctuary of Truth: <http://www.tourismthailand.org/Attraction/The-Sanctuary-of-Truth-548>

Art in Paradise: <http://www.tourismthailand.org/Attraction/ART-IN-PARADISE-6570>



- **Museum and Family attractions**

Khao Kheow open zoo:

<http://www.journeytothejungle.com/>

RamaYana Water park:

<http://www.ramayanawaterpark.com/>

Teddy bear museum:

www.teddybearmuseumpattaya.com

Flight of the gibbon: www.treetopasia.com

Sirscha Tiger Zoo co.,Ltd: www.tigerzoo.com

Ripley's Believe It or Not! Museum:

<http://www.ripleysthailand.com/>

- **Sport Leisure Golf:**

Golf: Pattaya is the paradise of golf lovers with more than 20 golf courses, which deliver the premium quality and incredible mountain range view.

Maui Thai: Spectacle real Muay Thai show or learn Muay Thai with Thai professional boxers. Website:

www.fairtexpattaya.com,

www.pattayamuaythaiacademy.com

Yachting : Be obsessed with the high-end boating at Ocean Marina Yacht Club

Do you know

1. Pattaya is sleepless city as it offers variety of entertainments throughout the night. Nightlife beyond Pattaya's hotels is more liberated, with discotheques, transvestite cabarets, nightclubs, karaoke bars and open-air bars. For its transvestite cabarets: Alcazar and Tiffany.
2. There are many attractive and popular festivals in Pattaya like Pattaya Music Festival-March / Wan Lai Fair (Songkran) –April / Loy Krathong- Nov

How to get there

1. **Cars:** Pattaya can be reached in around 2 to 2.30 hours drive along Bang Na-Trat Highway via Bang Pakong, Chon Buri and Si Racha. OR by opting Highway No. 36, the new route of Chon Buri-PattayaRayong or motor way from Rama 9 Road.
2. **Bus:** Air-conditioned and non-air-conditioned buses regularly depart from the Eastern Bus terminal (Ekamai).



Rayong

Explore beyond Pattaya and discover the quieter shores of the East Coast. From a traditional provincial capital to the charm of beaches, coves and offshore islands, the province of Rayong, covering 3,552 sq km, is situated on the eastern shore of the Gulf of Thailand, the provincial capital located 179 km from Bangkok. Less developed than the Pattaya area, it combines an attractive 100 km coastline, with beaches and offshore islands, and a green fertile interior. Rayong town has a few attractions, while the most famous destination is the island of Ko Samet, although beaches along the mainland coastline are becoming increasingly popular.



Things to do

• Beaches & Islands

Hat Laem Charoen: Located 5 km from Rayong town, the beach is noted for its seafood restaurants.

Hat Mae Ramphueng: This 10-km stretch of sand, located 12 km from town on the way to Ban Kon Ao, is good for swimming.

Ban Phe: One of the provinces major fishing communities, about 19 km from town

Ko Samet: Located within the Khao Laem Ya-Mu Ko Samet National Park and 6.5 km off the mainland, the island of Ko Samet, covering 6.72 sq km, is Rayong's most popular destination. Blessed with lovely scenery and beaches, it is easily accessible, while there is a considerable range of accommodation available. Triangular-shaped, most of the land area is forested with beaches.

Suan Son: Here, about 4 km from Ban Phe and 29 km from Rayong town, are white sandy beaches and picnic areas.

Laem Mae Phim: A little over 11 km from Suan Wang Kaeo and 45 km from Rayong town, this is a pleasant location for swimming and relaxation.



• Inland Attractions

Khao Chamao-Khao Wong National Park, The National Park in Amphoe Klaeng, reached by a left turn at the 274 km marker on Highway No. 3, covers just under 85 sq km and is noted for its almost pristine forest, along with limestone mountains, caves and waterfalls.



• Sporting and Activities Opportunities

Horse Riding Available at the Orchard Park Riding Club, some 7 km off Highway No.3 after a left turn at the 260 km marker, and Slo Bunny Horse Riding Training Centre at Hat Mae Ramphueng. Tasting a fruit buffet: During the fruit season between late April and June, there are several orchards offering fruit buffet includes durian, rambutan, rose apple, mangosteen etc. Visitor will enjoy tasting fruit fresh from the trees.

Golf: Rayong is one of Thailand's favorite golf destination, where you can play golf all year round. The wonderful courses are invariably located close to Rayong's major tourism destination.

Firefly Watching on Boats, Prasae River: It is a wonderful experience to spectacle sparkling firefly along the river. There are several rafting companies to provide the services including Phae Mueang Klaeng, Phae Sai Nam and Ruean Phae Homestay.



How to get there

1. **By Air:** Bangkok Airways operates flights from Phuket and Koh Samui to Rayong/U-Tapao. For more information contact Bangkok Airways (www.bangkokair.com) in Bangkok, Tel: 66(0)2-265 5555 or travel agencies in Rayong.
2. **By Bus:** Depart regularly from Ekkamai eastern bus terminal (near BTS Ekkamai). There are specific buses for those who wish to go to Koh Samet that terminates at Ban Phe opposite the boat pier.

Trat (Koh Chang)



Popular for Families , Honeymooners and weddings & Celebrations. For those who want to have a very relaxing holiday, away from hassle bustle Koh Chang is the place!

- **Islands and Beaches**

Ko Chang National Park: This comprises an archipelago of 52 islands, of which Ko Chang is the largest, and the second largest in the country after Phuket. Covering an area of 650 sq km, it features fine beaches, coral reefs and plentiful marine life, while inland are forested hill and waterfalls, as well as fruit orchards. The best beaches are on the west side spreading from the north to the south, including Ao Khlong Son, Hat Sai Khao, Hat Khlong Phrao and Hat Kai Bae.



Ko Mak, to the south, which has several beautiful bays and beaches, as well as coral reefs; Ko Kut, the archipelago's second largest island and located in the southern most point of Trad's territorial waters; KoWai; Ko Lao Ya; and Ko Kradat. Renowned for both deep-water and shallow-water corals are the Mu ko Kra and Mu ko Rang, which are to the west of Ko Mak.

• Activities

Waterfalls, temple, the National Park ,camping, Learn Thai Cooking, Elephant trekking, Tree top adventure ,jungle hiking, and Some opportunities for diving and snorkeling

How to get there

Ferries from the mainland to Ko Chang and other islands depart Laem Ngop Pier, some 20 km from town, every 45 minutes daily from 6.30 a.m. to 5.00 p.m. (Tel: 0 3953 8318, 0 3959 7434); Centre Point Pier, 3 km from Laem Ngop, departing every 35 minutes from 7.00 a.m. to 5.00 p.m. (Tel: 0 3953 8196); and Ao Thammachat Pier, 15 km from Laem Ngop, departing every 30 minutes daily from 7.00 a.m. to 7.00 p.m. (Tel: 0 3959 7143).

Getting There

1. **By Car:** Trat town is 315 km from Bangkok and is reached via Highway No. 34 to Chon Buri, then Highway No. 344 to Amphoe Klaeng and onwards long Highway No. 3, a total distance of 315 km.
2. **By Bus:** The five-hour journey from Bangkok can be made on regular buses starting from Bangkok's Eastern Bus Terminal (Ekamai). Air-conditioned buses depart Ekamai every hour from 6.00 a.m. until midnight. Tel. 0 2391 2504. There are also air-conditioned buses departing Mo Chit II Bus Terminal from 6.00 a.m. to 5.00 p.m. Tel. 0 2936 2852-66.
3. **By Air:** Bangkok Airways has daily air services between Bangkok and Trat. From the Trat airport (not far from the ferry pier in Laem Ngop) there are numerous transportation options for transferring to Koh Chang, including minibus and rental car. Visit www.bangkokair.com for more information.



***TO TEST YOUR KNOWLEDGE
LOGIN/ REGISTER HERE.***